

INDWARA Y'IDUHIMBA DUTO DUTOBITA SELILE DUTEYE NKUMUHORO N'IKI (SCD)?

Imigwi y'indwara umuntu uvukana azikuye kubavyeyi igihe kamere y'ama selile ateye nk'umuhoro (amaselile ateye nk'uyu muhoro muri iyi pica) ivuye ku bavyiyi bombi. Ibinyetso nyamukuru y'indwara n'ukubumbwa nabi kwa ma selile atukura (RBCs) akamera nku kwezi kw'igice nkuko ipica ikurikira ivyerekana

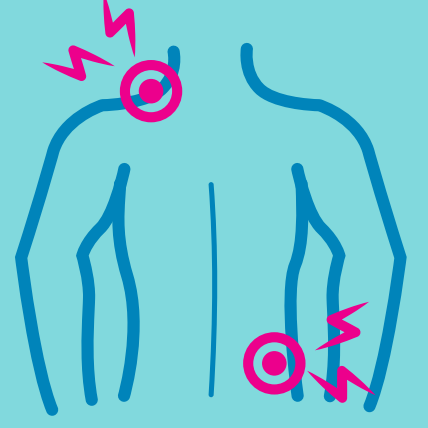
IMIBARE (STATISTICS)MURI AUSTRALIYA

Muri Australiya, SDC ifatwa nku burwayi budasanze bufiswe n'abantu bari hafi ya 1000. Kubera gutagira amakuru yuzuye, ugukwira kwira kwariyongeye mu myaka 10 irenze.

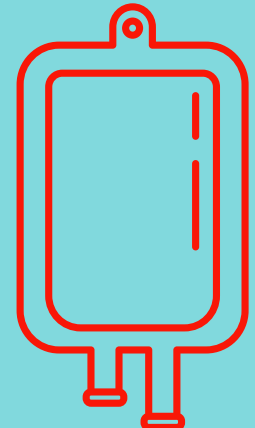


AUSTRALIA SICKLE CELL ADVOCACY INC

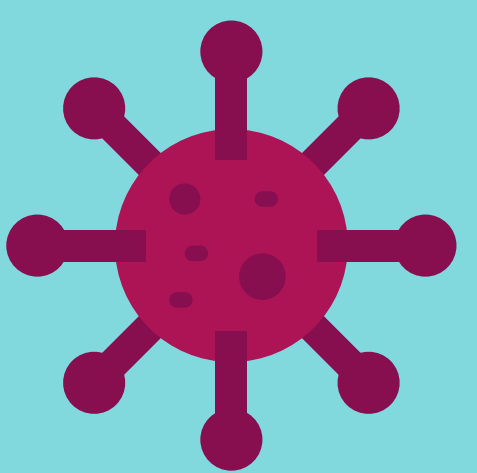
IBIMENYETSO BIMWE BIMWE



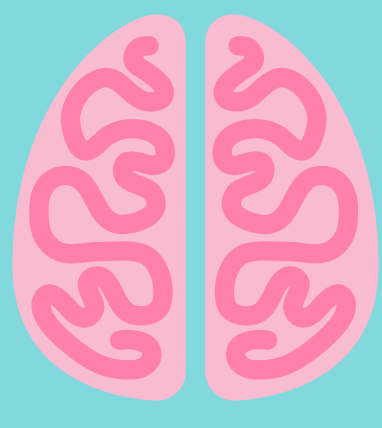
UBUBABARE



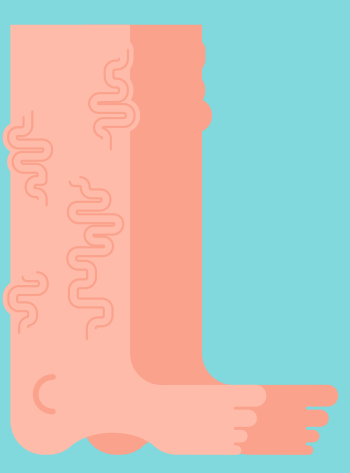
AMARASO MAKE



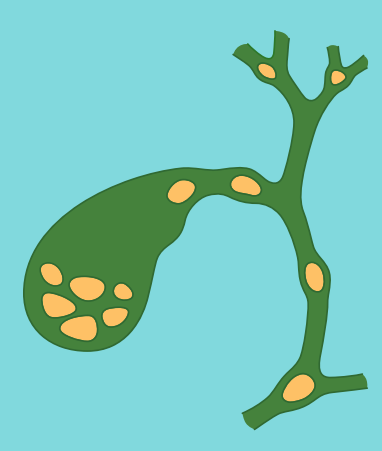
INDWARA ZANDURWA



STROKE



IBISEBE
KUMAGURU



AMABUYE MU
NDURWE

UBUVUZI

- Hydroxyurea (HU)
- Guterwa amaraso mumitsi /
- Ubuwuzu bwogusimbura amaselile atukura)
- L-glutamine umuti wifu banywa (Endari)
- Crizanlizumab (Adakveo)
- Oxbryta (voxelotor)
- Greffe des cellules souches hematopoietiques mu gifaransa

IBIJANYE NA ASCA

N'Ishirika mu rwego rwigihugu ritarondera inyungu ritanga ubufasha ku miryango n'abantu bagisweho n'ingaruka na SDC muri Australiya. Ibiro muri VIC, NSW, SA,WA na QLD Abariserukira muri ACT na Tasmania.

Mushikirane natwe:
E: info@aussicklecelladvocacy.org
W: <https://aussicklecelladvocacy.org/>
P: +61 1300 148 824

RIHABWA INKUNGA NA : LETA YA VICTORIA
IGISATA CO MUYOBOZI WA VICTORIA N'IBIRO
VYIWE

Udutabo twose twanditswe na ASCA
dusubirwamo Umuganga wumuhinga
mu vyamaraso y'abakuru n'abana (adult
and paediatric haematologist.)