

## WHAT IS SICKLE CELL DISEASE (SCD)?

Group of genetic conditions when sickle cell trait is passed from both parents.

Key characteristic of the diseases is the malformation of the red blood cells (RBCs) creating a half-moon crescent shaped cells.

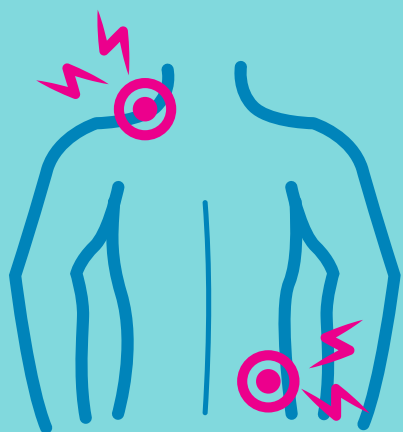
## STATISTICS IN AUSTRALIA

In Australia, SCD is considered a rare disease with an estimation of approximately 1000 people. With no conclusive data, prevalence has increased in the past 10 years

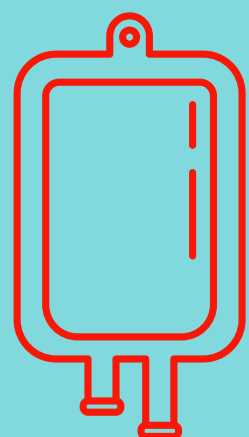


# AUSTRALIA SICKLE CELL ADVOCACY INC

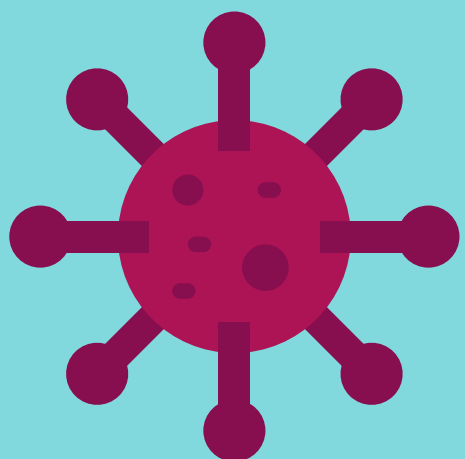
### SOME SYMPTOMS



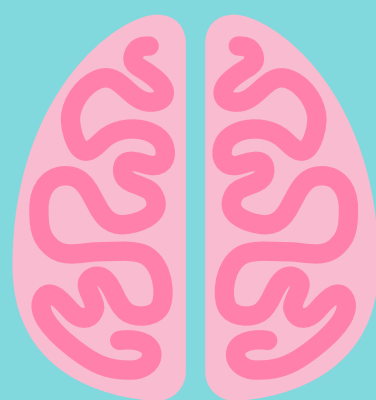
PAIN



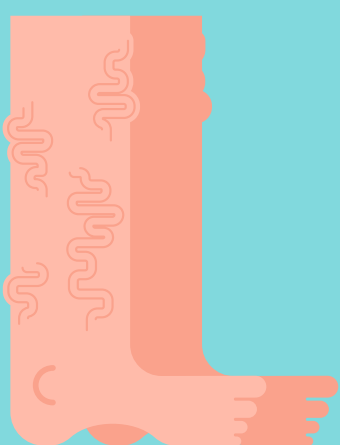
ANAEMIA



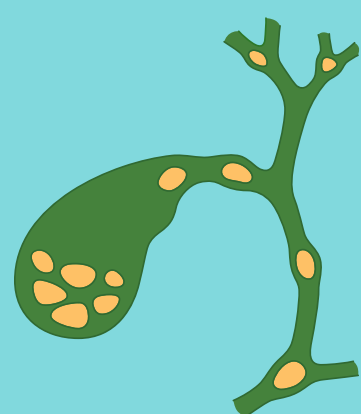
INFECTIONS



STROKE



LEG ULCERS



GALLSTONES

### TREATMENTS

- hydroxyurea (HU)
- Blood transfusion / Red Cell Exchange Treatment
- L-glutamine oral powder (Endari)
- Crizanlizumab (Adakveo)
- Oxbryta (voxelotor)
- Haematopoietic stem cell transplantation (HCT)

### ABOUT ASCA

A national not for profit organisation that provides support to families and individuals, that are affected by SCD in Australia. Offices in VIC, NSW, SA, WA and QLD Representatives in ACT NT and Tasmania.

Contact Us:

E: [info@aussicklecelladvocacy.org](mailto:info@aussicklecelladvocacy.org)

W: <https://aussicklecelladvocacy.org/>

P: +61 1300 148 824

SPONSORED BY:

VICTORIA STATE GOVERNMENT  
DEPARTMENT OF PREMIER AND CABINET

All brochures created by ASCA are reviewed by adult and paediatric haematologist.

## INDWARA Y'IDUHIMBA DUTO DUTOBITA SELILE DUTEYE NKUMUHORO N'IKI (SCD)?

Imigwi y'indwara umuntu uvukana azikuye kubavyeyi igihe kamere y'ama selile ateye nk'umuhoro (amaselile ateye nk'uyu muhoro muri iyi pica) ivuye ku bavyiyi bombi. Ibinyetso nyamukuru y'indwara n'ukubumbwa nabi kwa ma selile atukura (RBCs) akamera nku kwezi kw'igice nkuko ipica ikurikira ivyerekana

## IMIBARE (STATISTICS)MURI AUSTRALIYA

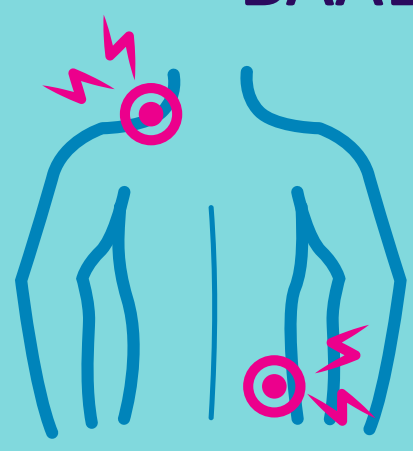
Muri Australiya, SDC ifatwa nku burwayi budasanzwe bufiswe n'abantu bari hafi ya 1000.

Kubera gutagira amakuru yuzuye, ugukwira kwira kwariyongeye mu myaka 10 irenze.

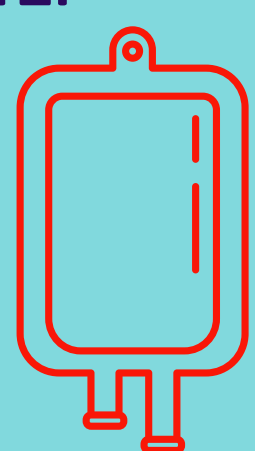


# AUSTRALIA SICKLE CELL ADVOCACY INC

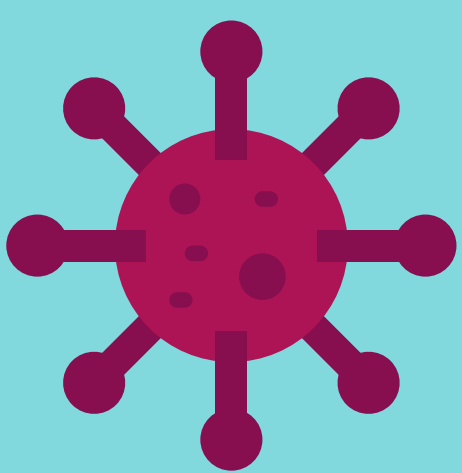
### BAADHI YA DALILI



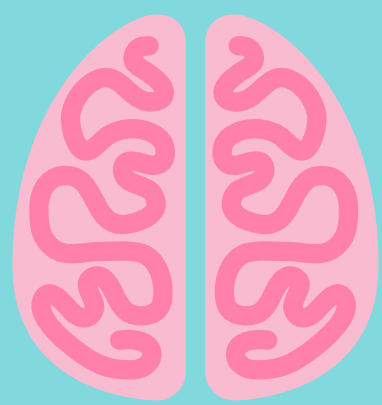
MAUMIVU



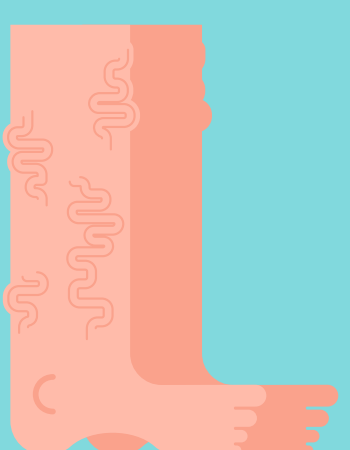
UPUNGUFU WA DAMU



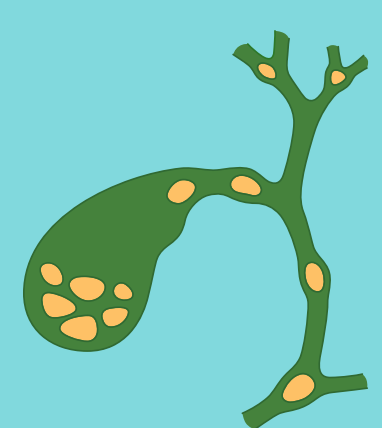
MAAMBUKIZI



KIHARUSI



VIDONDA VYA  
MGUU



MAWE YA NYONGO

### MATIBABU

- hydroxyurea (HU)
- Kuongezewa damu / Tiba ya Kubadilisha Seli Nyekundu
- Unga wa mdomo wa L-glutamine (Endari)
- Crizanlizumab (Adakveo)
- Oxbryta (voxelotor)
- Kupandikiza kwa seli ya shina ya uboho (haematopoietic) (HCT)

### KUHUSU ASCA

Shirika la kitaifa lisilo kwa faida ambalo hutoa msaada kwa familia na watu binafsi, ambao huhusiwa na SCD nchini Australia. Ofisi zipo VIC, NSW, SA, WA na QLD Wawakilishi wapo ACT NT na Tasmania.

Wasiliana Nasi:  
Barua Pepe: [info@aussicklecelladvocacy.org](mailto:info@aussicklecelladvocacy.org)  
Tovuti: <https://aussicklecelladvocacy.org/>  
Simu: +61 1300 148 824

IMEFADHILIWA NA:  
SERIKALI YA JIMBO LA VICTORIA  
IDARA YA WAZIRI MKUU NA MAWAZIRI

Vifurushi vyote vilivyoundwa na ASCA hukaguliwa na mtaalamu wa damu wa watu wazima na watoto.